



SEDIMENT REMOVAL SEPARATOR

Series : SI - 1050

SANT (SI-1050) Series Sediment Removal Separators (SRS) are manufactured as per latest advance technology and designed for the use for water Filtration in many Industrial applications and general services.

Benifits Of Using SANT SRS :

- INCREASES SYSTEM EFFICIENCY.
- PROTECTS PUMP SEALS
- EXTENDS LIFE OF SYSTEM COMPONENTS
- REDUCES SYSTEM ENERGY USAGE

Where To Install SANT SRS

SANT Separators are installed after the pump and before the rest of the equipment. The SANT Separator traps the system sediment in it's bottom purge chamber. The purge chamber does not offer resistance to system flow, even when it is full of sediment. The Separator has a constant pressure drop, unlike a Strainer which reduces flow as it gets dirty. The purge chamber is emptied periodically to waste through an automated purge system / by hand operated Ball Valve.



PIC-SRS-01

Comparing Separator With Strainer

Removal efficiency of a Strainer may be less than a Separator. SANT Separators are more efficient than manual Strainers as they remove 45 micron particles. Pot Strainer screen size allows much large particles to pass than a Separator. This allows larger particles to remain in the system that a Separator would have removed.

Cleaning a 'Y' Strainer or Pot Strainer is manual. SANT Separators can be automated so there is no manual labor involved.

Pressure Drop varies drastically for Strainers. Strainers increase in pressure drop as they become constant.

Cleaning of 'Y' Strainer or Pot Strainer requires shutting down system. Separators do not have to be taken offline to remove the solids.



INSTRUCTION MANUAL

Model : SI-1050

Sediment Removal Separator



Installation, Operation & Maintenance Instructions

General Description

SANT Model No SI-1050 Sediment Removal Separators (SRS) are recommended for both Sediment and Air removal in Hydronic Systems. It is designed and constructed in accordance with ASME codes on all models. It is an efficient Separator utilizing Centrifugal Action to remove system sediment or waste through an automated purge system or by hand operated Ball Valve.

Temperature & Pressure Rating

Maximum Operating Temperature 350 F
Maximum Operating Pressure 125 psig

Application

Cooling Towers systems, processes and Hydronic - Heating & Cooling systems.

Installation Instruction

1. It is recommended that the SRS be installed in the system main so that full system flow is directed through the SRS. This permits fast alimination of Sediment and solids that may damage pump seals or other system components.
2. The SRS needs to be mounted at sufficient height from the floor to allow flow down piping to be attached and taking out of strainer at the time of maintenance services.
3. The SRS should be located near a drain to facilitate the removal of collected sediment.

Operating Instructions

The SRS Separates sediment from the system by Centrifugal Force. Heavier than water sediment particles are thrown against the inner circle of the SRS and move down the walls to the sump in the bottom of the SRS. Collected sediment must be periodically blown down from 1" size Ball Valve connected on the sump at the bottom of SRS.

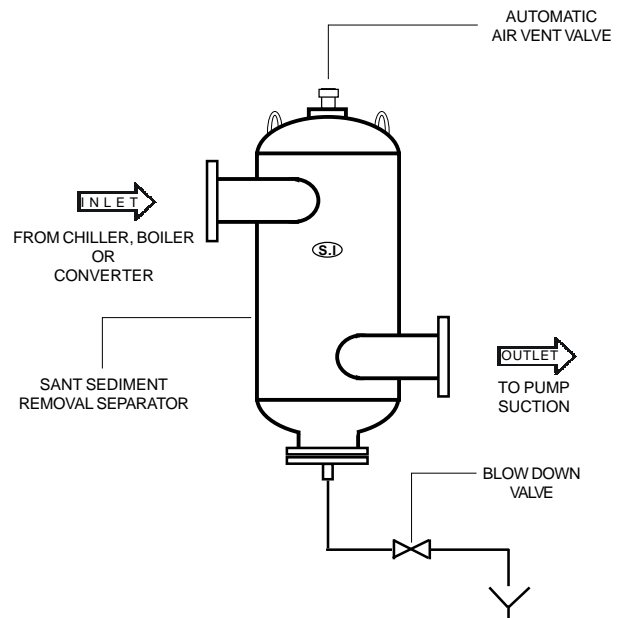
Service Instructions

The SRS must be inspected periodically for signs of corrosions, if corrosions exceeds .050" the SRS must be replaced.

1. SRS with strainer not require frequent service.
2. SRS without strainer is serviceless and need not require any type of service. There are no moving parts or strainers in SRS that require service.

Purge valves / Ball valves and associated equipment may require service.

Figure Below shows a typical installation with some of the optional equipment that can be utilized with SRS.



For Further Information, please contact at the Address given below.

SANT INDUSTRIAL CONTROLS PVT. LTD.

Block 'A'-94/1, Sudershan Park, Moti Nagar, New Delhi-110015. INDIA
Phone No : +91-11-25419419, Fax No : +91-11-25448444